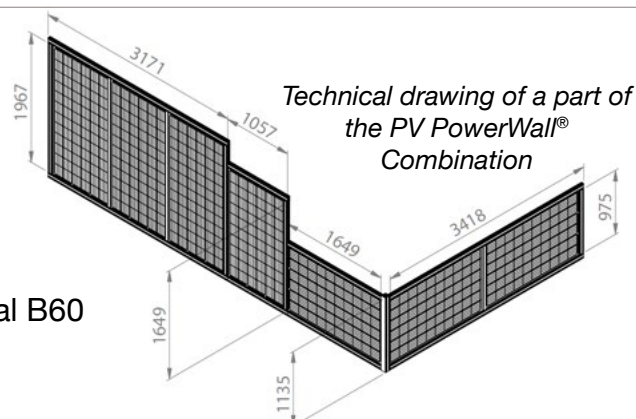


## Reference project: Terrace CARO5 and PV Power Wall

### *Family house with a lot of PV power!*

A PV terrace and two PV PowerWalls now decorate the terrace of a family house in Saxony. The terrace CARO5 was installed freestanding with 15 pieces of the transparent M40 Almaden modules (with 40% transparency).

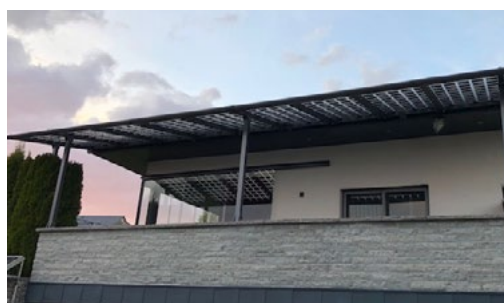
For the PV PowerWall® construction 7 pieces of bifacial B60 and 6 pieces of bifacial B72 modules were combined. A total output of 7.3 kW was achieved.



**Do you also want to equip your own home with PV power? We would be happy to help you with the calculations and make you an offer tailored to your needs. Whether terrace, carport or privacy fence; we have the right solution for you.**

## Reference project: A balcony as an aesthetic PV power plant

The photos below show that our „PV Terraces“ are also very well suited for generating electricity and roofing balconies. Our customer from Böhmenkirch on the Swabian Alb has thus roofed his terrace over a length of 10 m and installed 2.5 kWp. He covers a large part of his electricity requirements with south-facing modules. The semi-transparent modules (40%) ensure that the balcony and the rooms receive enough light.







## Reference project: PV-Carport

A wooden carport with 15 M72 modules recently adorns a driveway in Merseburg (Saxony-Anhalt).

The construction blends in perfectly with its surroundings and provides parked cars with effective protection against the weather. This carport size (Carport XXL-600) is optimal for 2 cars and ensures a comfortable entry and exit.

**You will also find the right construction for your driveway in our range. We would be pleased to make you a special offer.**



## e-Mobility: Our Wallboxes for reliable and fast charging

### Simple operation

With an adjustable AC charging power from 3.7kW to 22kW, the wallbox is ideally suited for charging electric vehicles. The clearly visible LED status display provides perfect information about all charging states.

### High security

The wallbox is based on safety and has an optional RCD type A (30mA~) and DC residual current detection (6mA=). This makes installation by a qualified electrician very easy, even in existing electrical systems. The weatherproof and lockable housing with protection class IP44 can be mounted on the wall or free-standing on our constructions.

### Modularly expandable

The wallbox can be expanded easily and is therefore also an optimal and smart solution for large parking facilities.



**Introductory price  
on request**

### Wallbox GLB - home charging station for electric vehicles

- according to IEC 61851-1 mode 3
- Enable input for external key switch, Time switch, radio hand transmitter, relay, Panel lockable with integrated lock
- Connection: 400V AC / 50Hz, 3-phase
- Number of charging points: 1
- Charging socket type 2 with interlock according to IEC62196-2
- Max. Power per charging point: 22kW
- Charging current (min-max): 6A - 32A
- Nominal connected load: 22kW
- Fuse protection: FI 40A 3p C 30mA type A, integrated DC residual current detection (6mA)
- WxHxD: 205x422x124 mm
- Mounting type: Wall mounting
- Protection class: IP44
- Impact strength: IK08
- Ambient air temperature: -25°C to +40°C





## Offer of the month: New LED lighting rails We put your construction in the right light!

You already have one of our constructions or want to buy one?  
We have the right add-on for you:  
Premium LED lighting rails that fit perfectly into the existing slots of our aluminum profiles.

### Introductory price on request

(stable anodised aluminum with easy click® system)

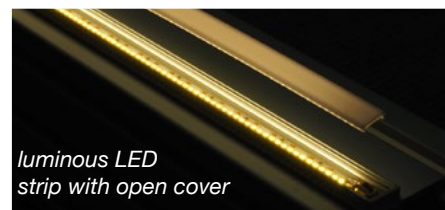
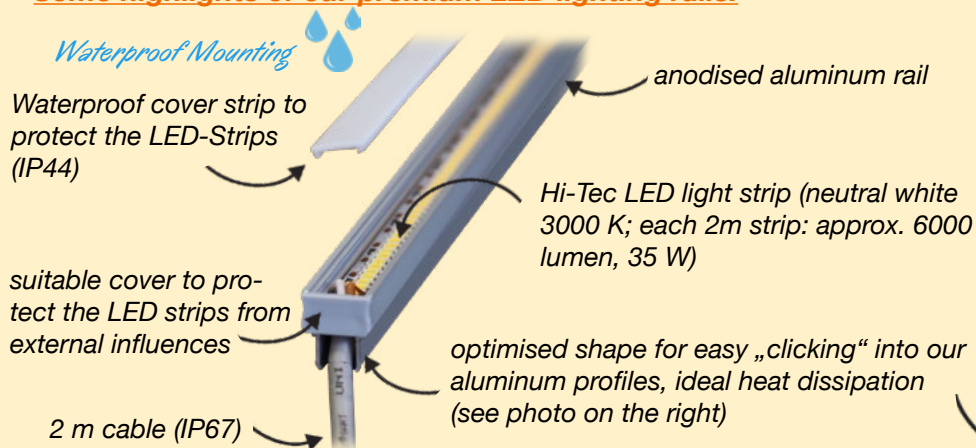


Sample: Terrace EVA3 freestanding with 6 LED light strips

+ compatible driver:  
up to 4 LED-strips  
up to 6 LED-strips  
up to 10 LED-strips

prices on request

#### Some highlights of our premium LED lighting rails:



luminous LED strip with open cover



The cables run in the slits and can be covered with cover strips



luminous LED rail, embedded in our aluminum profile



**GridParity AG**  
info@gridparity.ag  
Tel: +49 (0) 8131 3307 560



visit our website:  
[www.gridparityag.com](http://www.gridparityag.com) →